

Endurica EIE™

FAST LOADS PROCESSING

.....

Endurica EIE™ is the fast way to go from lengthy multi-channel load signals to fatigue life prediction. Use EIE with either CL or DT to simulate the full experience of your part in service.

BENEFITS

- Simulate durability impacts of full-length loading signals.
- Speed up strain history generation by orders of magnitude, compared to direct FEA solution.
- Achieve real-time load processing speeds for digital twin applications.

FEATURES

- EIE makes it easy to map nonlinear load spaces having up to 6 independent channels (channel can be load, displacement, rotation, etc.). User has full control over map discretization.
- EIE's pathfinder feature automatically generates boundary condition commands to drive your finite element model(s) through motions required to map grid points.
- EIE's channel reduction feature optimizes efficiency for map generation and interpolation.
- EIE interpolates multichannel input signals in .rsp and .csv formats via the map to rapidly generate strain history for your finite element model.
- EIE offers multi-threading and binary I/O for unprecedented execution speed.
- EIE produces strain history ready for analysis with CL, DT, and fe-safe/Rubber™.

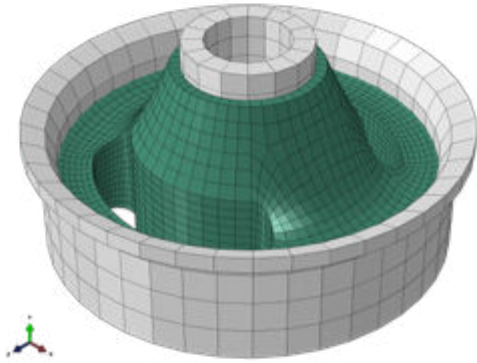
Endurica

Get Durability Right®

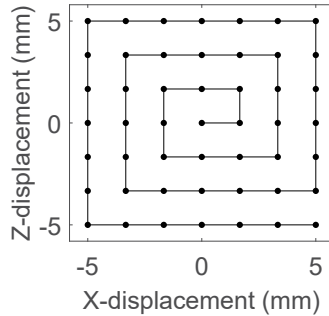
TECHNICAL NOTES



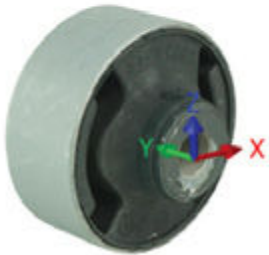
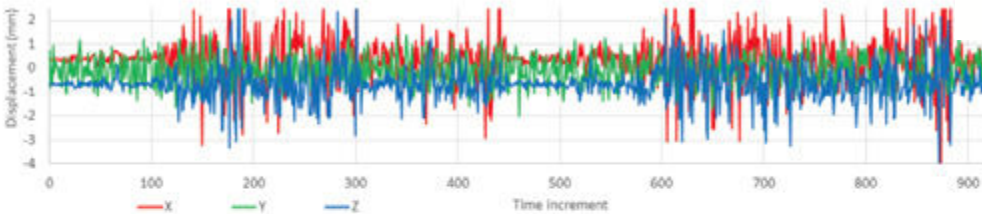
1) Define the input channels



2) Populate the nonlinear interpolation map



3) Solve for strain history



4) Solve fatigue life

C-SUITE INSIGHTS



MAKE THE MOST OF YOUR FEA LICENSE

Free up your finite element solver license. With EIE, FE solve time is reduced by orders of magnitude! What once took days is now completed in minutes.

MORE REALISM

Get closer to your customer's true use cases - Model full road load histories.

MORE LOAD CASES

EIE's high efficiency lets you look at ALL of your customer's use cases.

BREAK THE ANALYSIS PARALYSIS

Don't get stuck on convergence issues. EIE's flexible load space mapping methods get you out of 'convergence jail'.

Endurica LLC

1219 West Main Cross St.

Suite 201

Findlay, Ohio 45840 USA

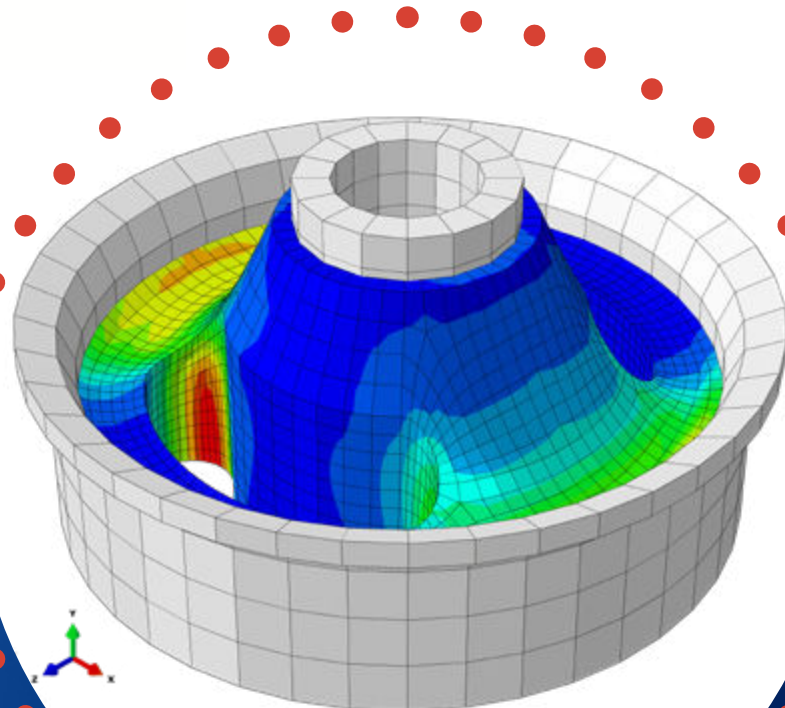
+1.419.957.0543 | endurica.com

THE ENDURICA DIFFERENCE

Learn more at:

www.endurica.com/fatigue-solver-software/endurica-eie

Call today to request a trial: **+1.419.957.0543**



Endurica

Get Durability Right®