

evince verb  
[ɛˈvɪns]

to reveal the presence of

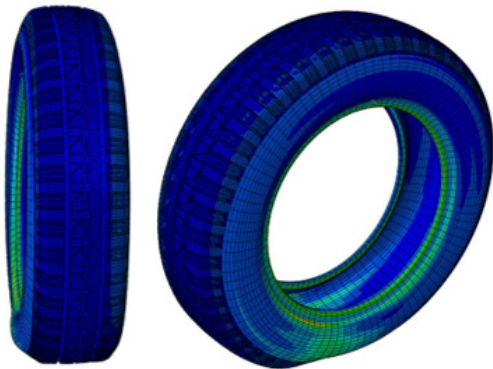
## RAW MATERIALS SUPPLIERS COMBINED TESTING AND MODELING SERVICE

 **EVINCE**  
*Reveal Your Material*

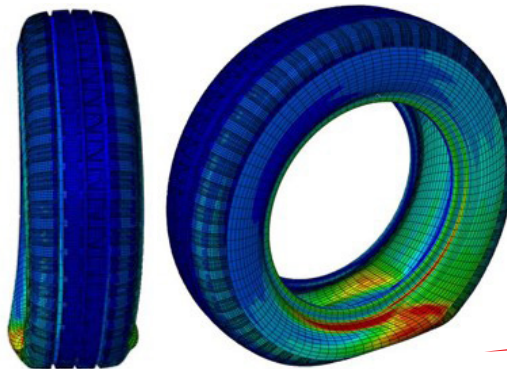
The Endurica EVINCE testing and modeling service reveals your materials' unique advantages in terms of your customer's real world product performance, without the time and expense of a physical prototype build. Use product performance simulation to showcase, validate, and optimize.

### EXAMPLE: PASSENGER TIRE

**5° Slip Angle**  
**100% Rated Load**



**5° Slip Angle** **200%**  
**Rated Load**

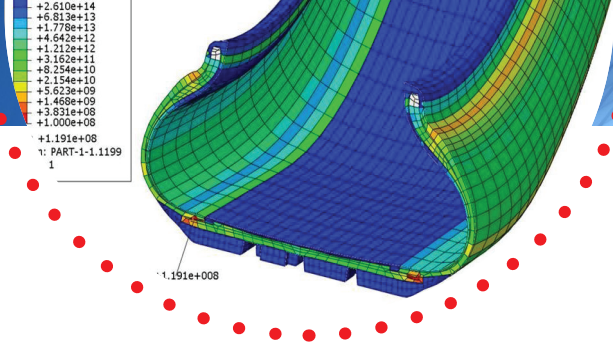


Imagine the impact your team can make with finite element simulation results highlighting the benefits of your new additive, polymer, or filler.

**Endurica**  
Get Durability Right®

## SIMULATE THE EFFECT OF YOUR RAW MATERIAL ON TIRE PERFORMANCE

- Durability
- Rolling Resistance
- Heat Build-Up
- Handling / Stiffness
- and more



## HOW IT WORKS

- You specify product geometry and operating conditions
  - Use a pre-built Endurica model (tires, bushings, mounts, etc.) or
  - Request your own custom model
- You specify performance parameters that are meaningful to your customer
  - Dimensions and shape
  - Stiffness and damping
  - Heat Build up / Rolling Resistance
  - Durability / Fatigue / Ageing / Ozone attack
  - Wear
- Endurica characterizes the materials to be compared
- Endurica simulates product performance, using world-leading finite element codes as well as our own durability solvers.
- Endurica prepares visualizations and a summary report
  - Color contour plots that highlight the performance advantages of your material
  - Animations that give your customer confidence you understand their application
  - Simulation results full of rich physical insights that can substantiate claims about “how this works”
  - Compound rankings based on predicted product performance

## THE ENDURICA DIFFERENCE

Call **+1 419.957.0543** or **+352 691 398 233**

or email us today: [info@endurica.com](mailto:info@endurica.com)

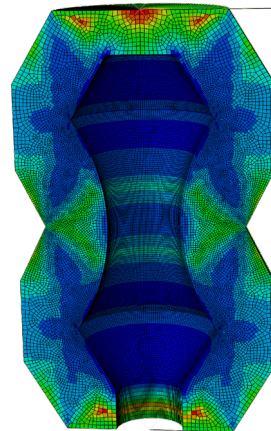
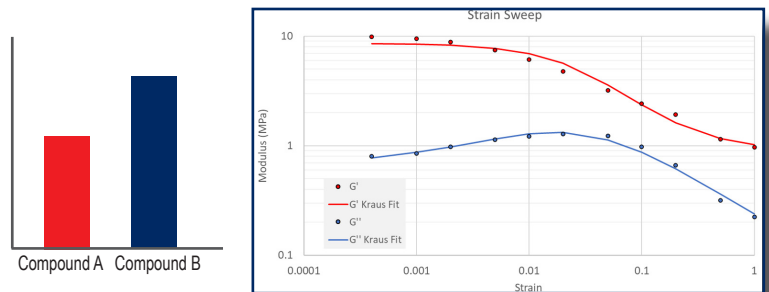
Scan for more info:



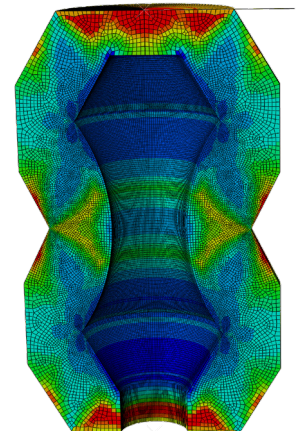
Simulation, combined with Endurica's testing methods, provides the ability to realistically account for actual tire service conditions in a way that no other standard testing can.

## YOU WILL RECEIVE

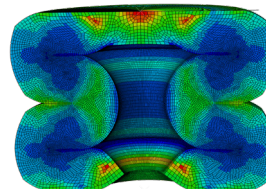
- Product-specific performance comparisons of your new polymer, filler or additive in your control and feature rubber formulations
- Application-specific results that take into account realistic service conditions
- Broad selection of performance parameters and criteria
- Summary report and insightful visuals (contour plots, animations) that highlight your material's benefits to your customer's product
- Expert support in leveraging the industry's most powerful methods for characterization and simulation



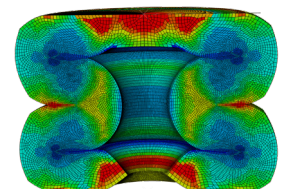
Compound A



Compound B



Compound A - under compression



Compound B - under compression

**Endurica**  
Get Durability Right®

**Endurica Europe SARL**  
9, avenue des Hauts-Fourneaux  
L-4362, Esch-sur-Alzette  
Luxembourg  
+352 691 398 233 | [endurica.com](http://endurica.com)